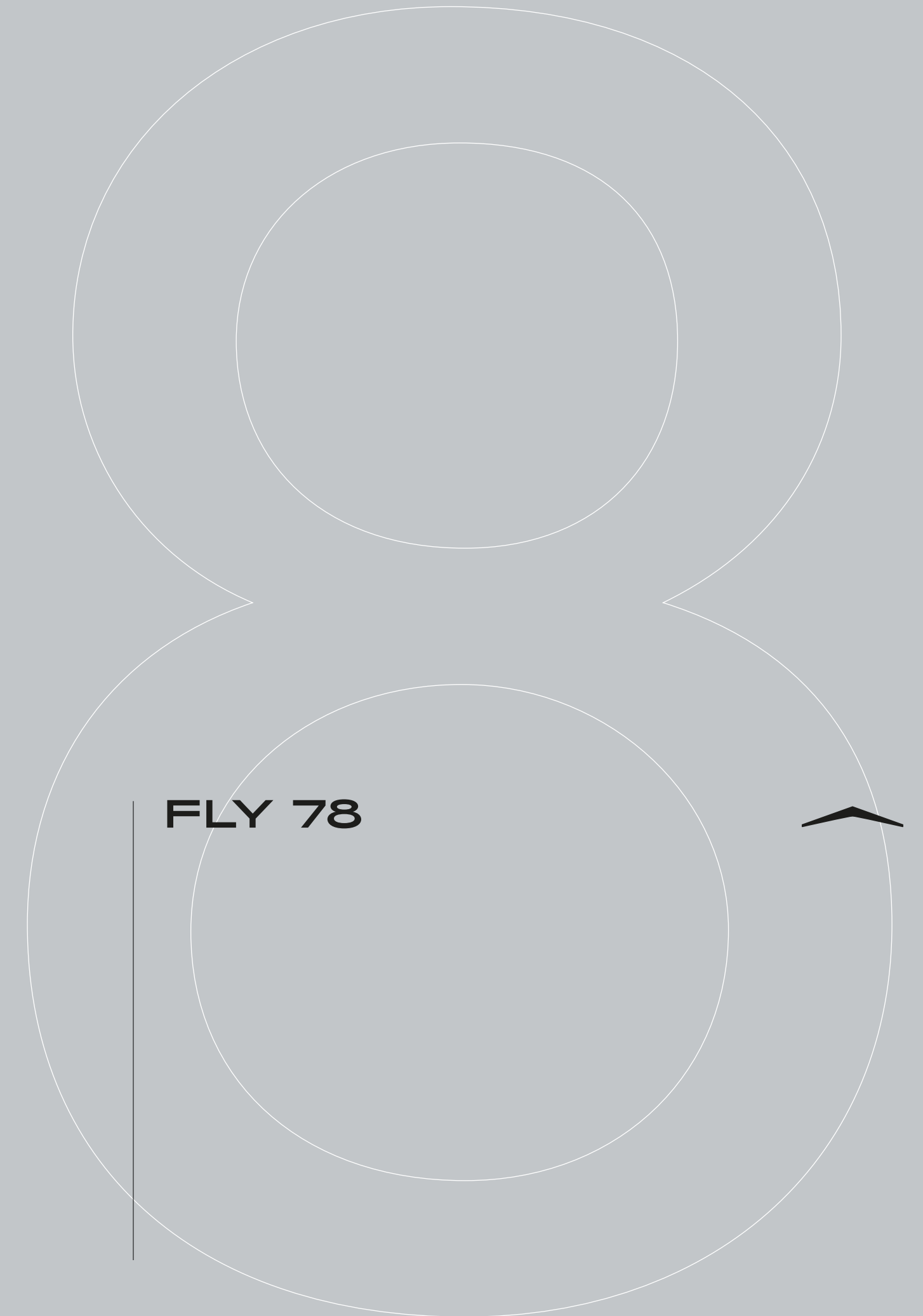
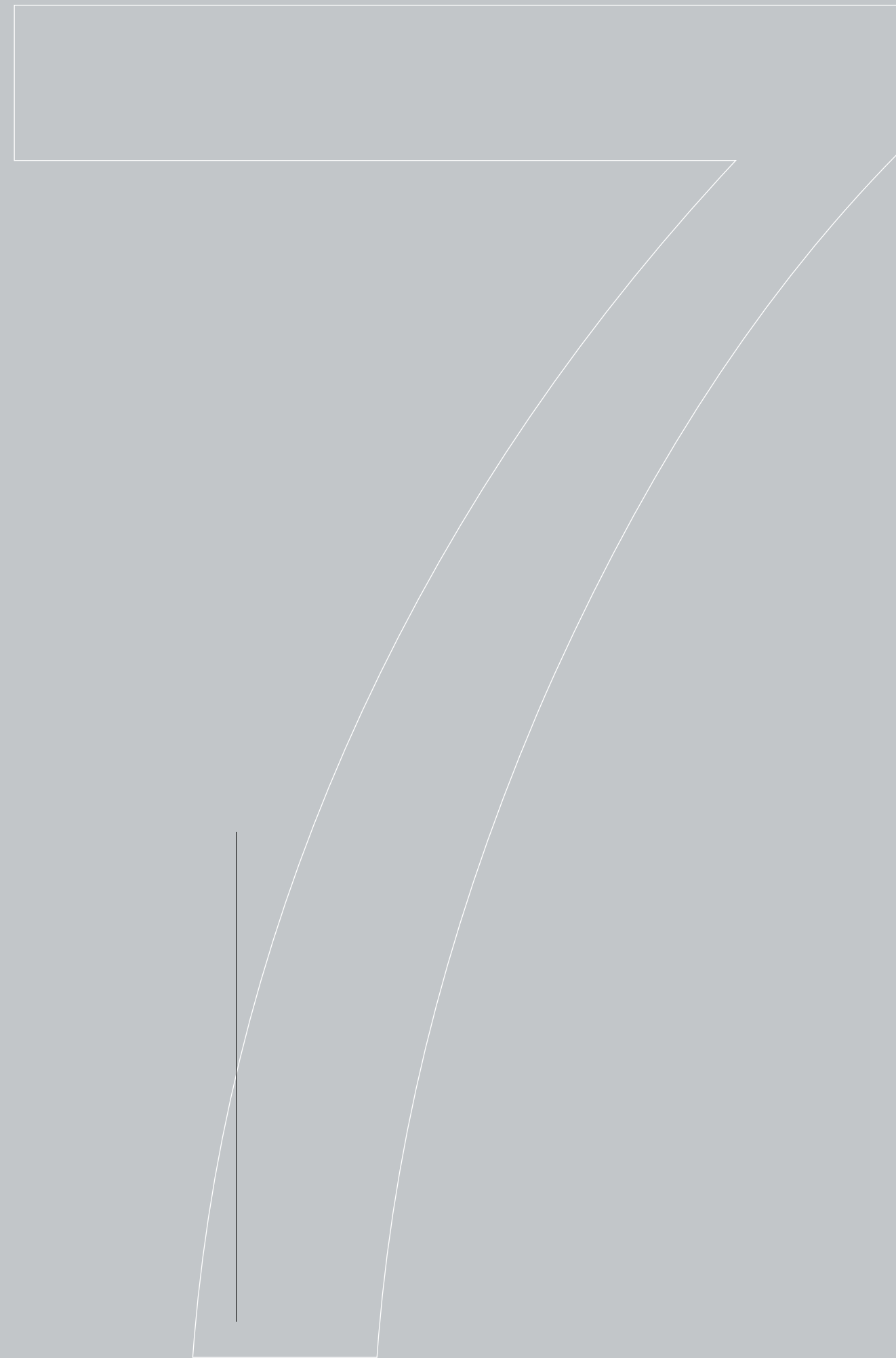


AZIMUT



# INDEX

01	THE DESIGN & LIFESTYLE ON BOARD	P04
02	HER MAIN TECHNICAL FEATURES	P31
03	FLY 78 SPEC SHEET	P40
04	THE FLY SERIES	P45
05	ABOUT AZIMUT	P47



A one-of-a-kind beauty, enrapturing, that steals your breath away, leaving you speechless. An extraordinary idea as the only possible pathway, to get to where you want, to explore, to go beyond.

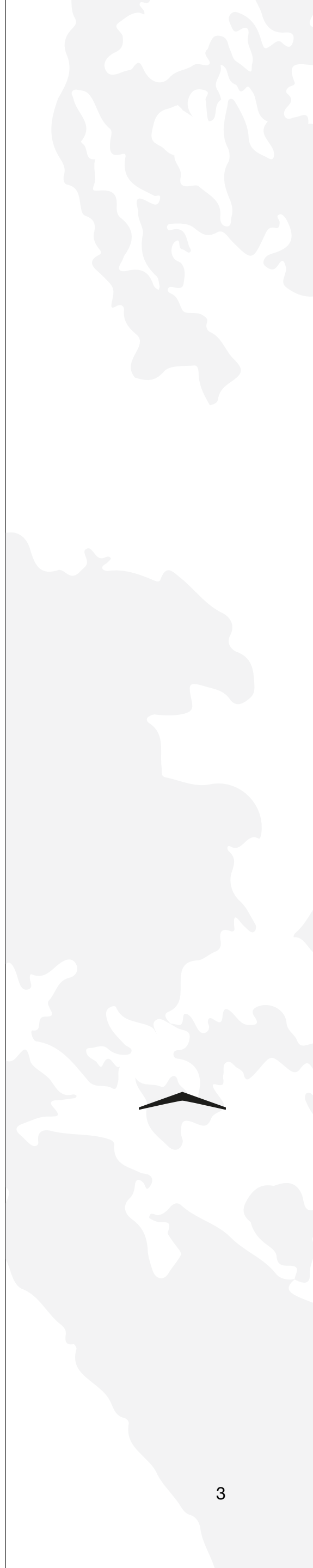
The freedom of embracing the unknown, that you know you'll love as a part of your very own story. A thought that provokes your mind and then inspires you to aim for the impossible, making mistakes, yet being brave.


A magic je ne sais quoi that enchants and intrigues you, moving you to feel more and to sense uniqueness.

The choice to risk it all, the one that makes you go for it, to impress yourself and all those who are worth it.

Welcome to Azimut.

AZIMUT.  
DARE TO AMAZE.





01

# THE DESIGN & LIFESTYLE ON BOARD



# FLY 78, GRANDEUR AND RATIONAL CONFIDENCE



Through impeccable spatial solutions, the Fly 78 mimics the ambience of a larger yacht without compromising the sportive agility of smaller vessels.

Secluded quarters eclipse behind-the-scenes service happenings, in the first ever boat in its category to organize completely partitioned areas for the galley and crew. A fluid and original onboard culture for the guests, elated by space bliss and sheer sophistication.

Revel in the atmosphere of the Fly 78, without compromise.







Welcome aboard, ladies and gentlemen.

Let us begin the tour.





# SHE EXPRESSES SCULPTURAL DYNAMISM







The exteriors of the Azimut 78 give the appearance of being sculptured out of pure movement. From stern to bow, from the sea to the sky, sculptural tension permeates the boat's contours. The hull is testament to the constant quest for novel, innovative shapes. With his creativity and innovative design, Alberto Mancini reinvents and embellishes the accepted shape and nature of a yacht. Through its dynamic lines, static elements become fluid, boat becomes sculpture and yachting is transformed into a form of visionary art.



# PENINSULAR PARADISE

Looking forward to the sea, the bow lounge is divided in double, yet complete in communication. Aft, a sofa looks across the folding coffee table to a counter-facing row of seating and beyond. The fore part features generous sunbeds for three.











The Fly 78 offers three inviting areas on the flybridge, each playing its part in the composition of a unique entertaining array. Overlooking the bow, the wide sunbathing spread proposes roofless relaxation. The American bar and adjacent dinette stay cool by contrast under the hardtop.





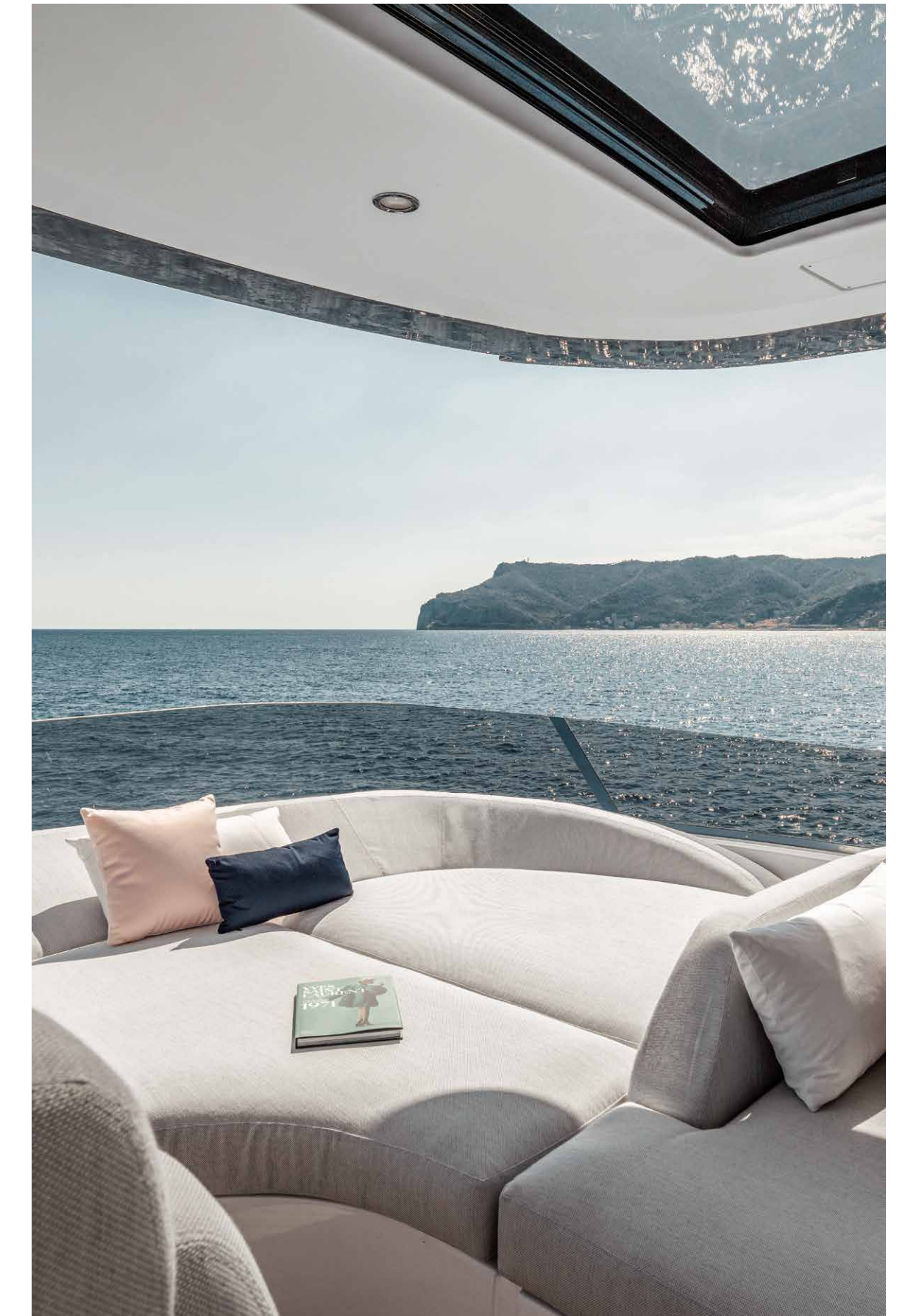
# A SPACE FOR INFINITY



Wide open, both to the environment and the imagination, the aft area can accommodate extra sunpads or counter-facing sofas and an extra cabinet for a double American barbecue.



Oversized cushions dress up the yacht's largest flush outdoor deck as a temple to comfort in nature. It's a pleasure to dine or just relax up here, with plenty of space for guests to spread out and panoramic views from every angle.





# DESIGNED TO WELCOME



Extending the salon out onto the sheltered aft deck, the cockpit serves ample seating with a fully appointed bar cabinet.









The living area enjoys perfect privacy, with a door to separate the forward galley, helm and crew quarters. The crew performs all onboard duties uninterrupted, using the side service door to access independent walkways.



# AN ABSOLUTE AESTHETICS

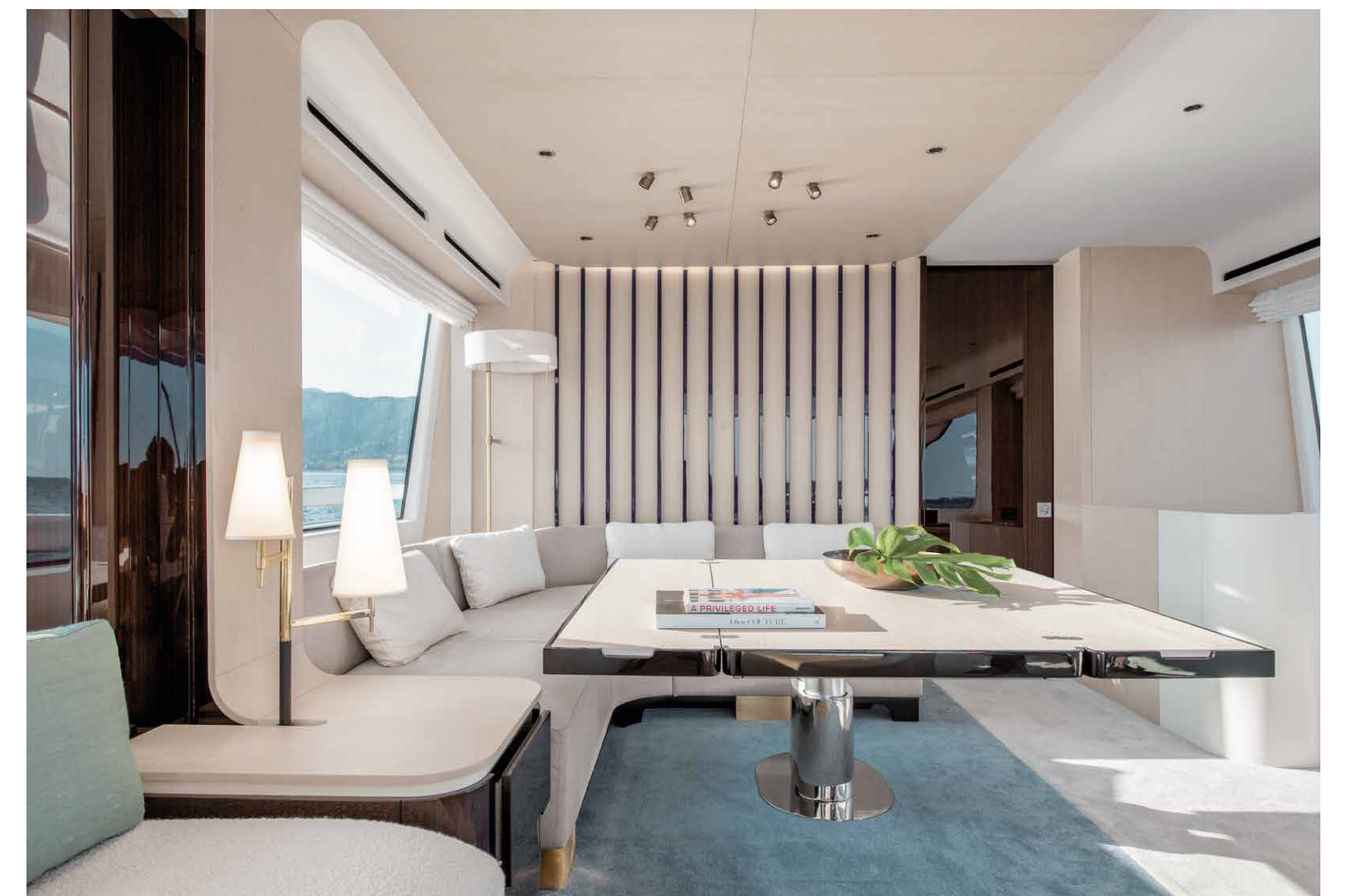


The total interior project was designed by Architect Achille Salvagni. Every element, from the overarching structure down to the most minute detail, follows the flow. The work is recognized by soft and smooth shapes, furniture that seems suspended and characterful color accents.





A sweeping, singular social space reincorporates tradition and entertains new ideas. The Fly 78 goes beyond the lounge-dining dichotomy to propose a fresh concept, the choice of a Full Lounge layout in addition to the traditional one. With a transformation of the forward coffee table, a newfound formal dining accomodates eight.





# LIFE-STYLISH SPACES



Noble materials, fine fabrics and sophisticated finishes: every detail reflects the made-in-Italian care of Azimut Yachts.

Now, let us discover the guest accommodations.

Shall we?







[ The owner's suite is served by one dressing room, a second closet and large windows for natural light ]



# AN ENVELOPING SENSE OF WELL-BEING



Dreaming of a life at sea truly free from spacial restriction, the designers put together an owners suite that offers everything one might need in perfect proportion. The well-dressed arrangement is roomy and livable, leaving little behind on land.

[ A nice vanity provides an additional amenity for the perfect staycation ]







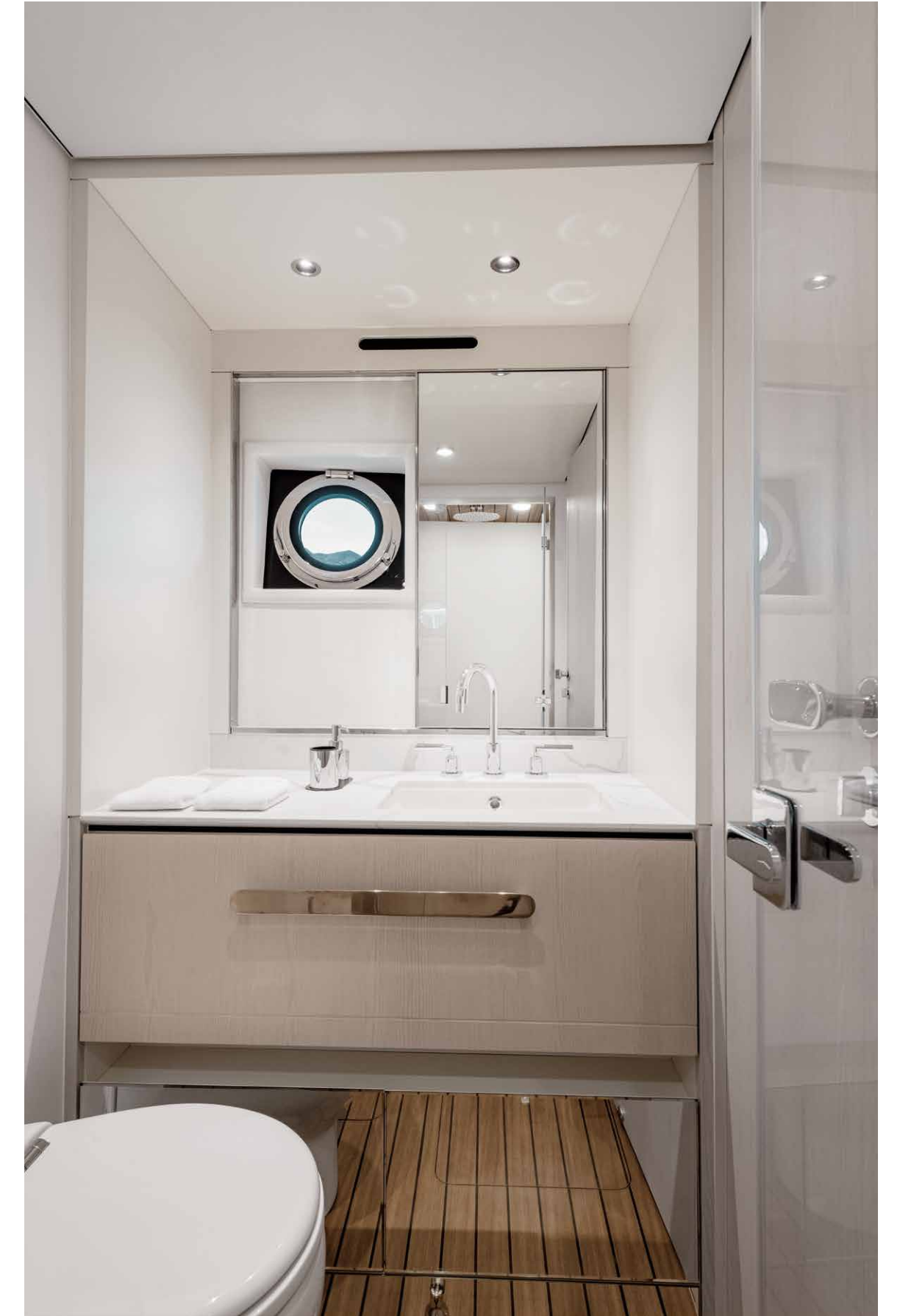
# THE ART OF HOSPITALITY

The choice of Triple Pod Propulsion lends more space to the accommodations below deck, allowing the designer to extend the comfort of VIP to two of the guest cabins.





[ The unexpected orientation of the forward VIP creates full-height walking room all around the bed. ]



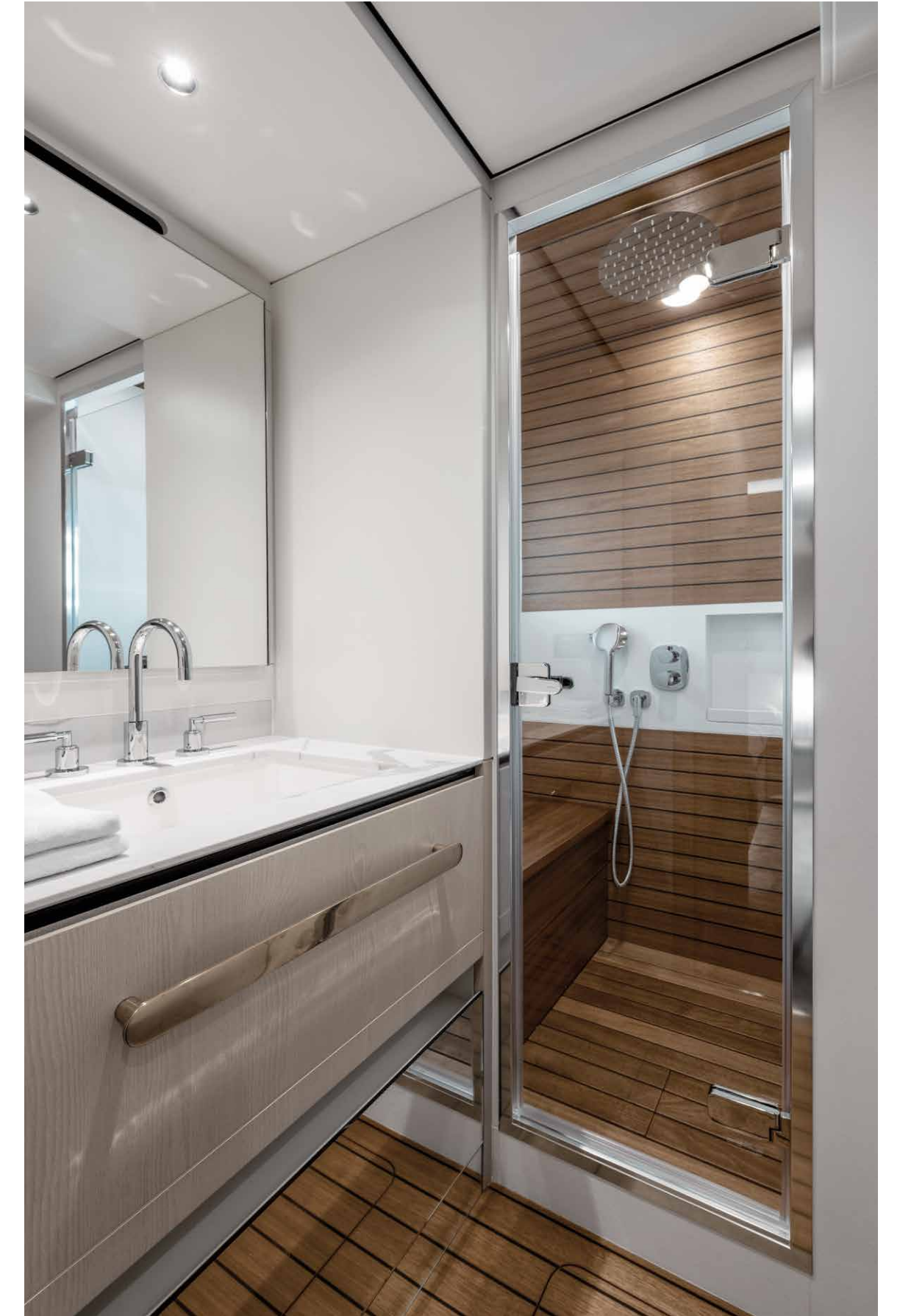




[ A second VIP with queen size bed and full height space all around the bed ]



[ The double cabin enjoys a wide window and, like all the other accommodations, an en-suite bathroom. ]







The galley, adjoining the wheelhouse, also contains the crew mess and a stairway which leads directly to the crew quarters on the lower deck. It opens directly onto the side walkway whilst another door separates it from the saloon, creating a layout which offers complete independence for crew and an exceptional level of privacy for the owner and guests.








[ The hydraulic bathing platform is the launch pad for aquatic adventures. Toys and equipment may be stored in the spacious transom garage. ]







02

# HER MAIN TECHNICAL FEATURES

The beauty of the Fly 78 is not solely a matter of exterior and interior design elements that combine to perfectly play out Azimut's essence.

Her beauty is also about discovering the technological advancements and special components that contribute to making her truly unique and highly innovative.





# LOW EMISSION YACHT



## TRIPLE POD PROPULSION COMBINED WITH CARBON FIBER

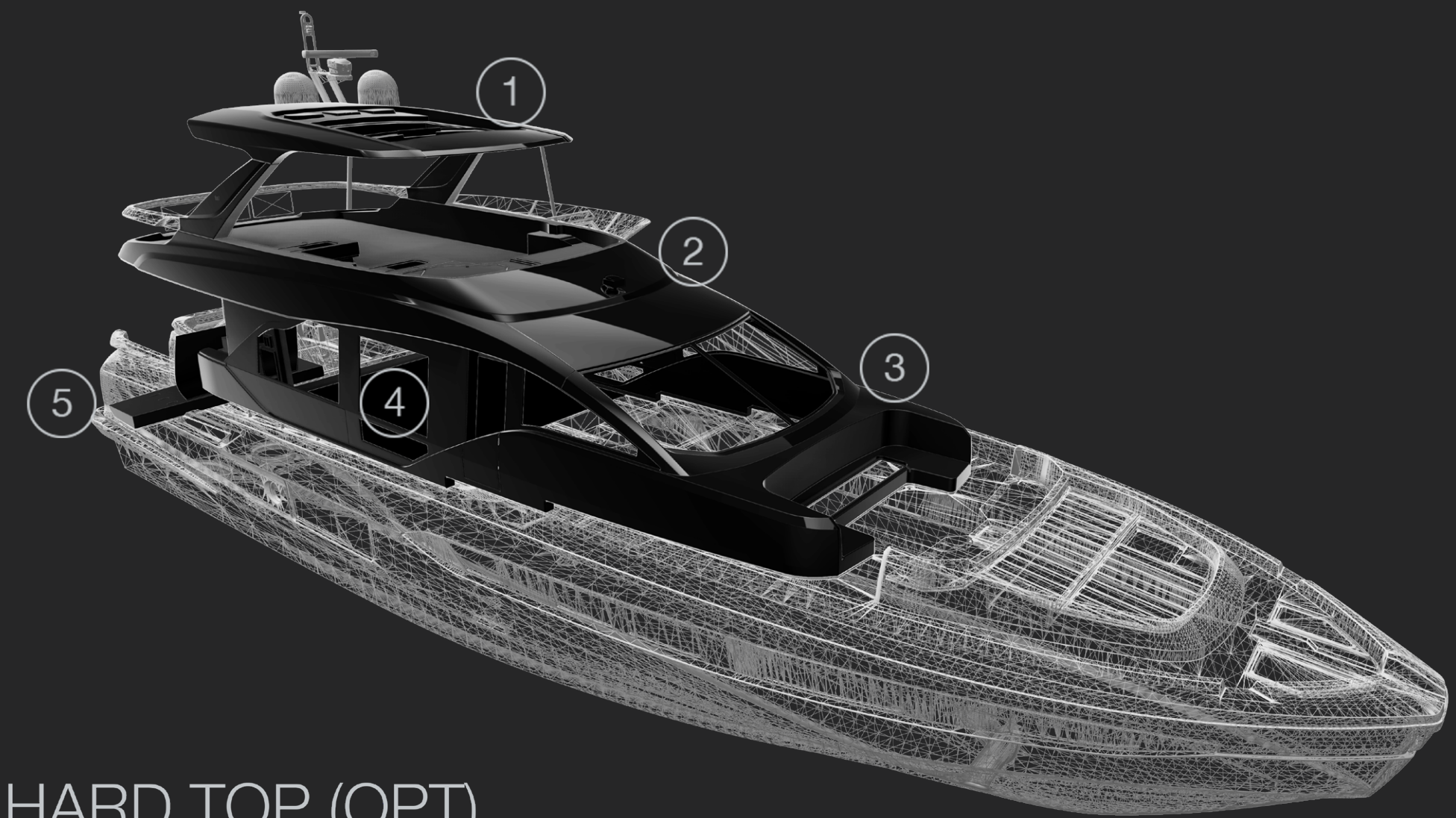
The adoption of triple Pod propulsion, combined with the optimization of the water lines and the extensive use of carbon fiber, reduces fuel consumption and CO<sub>2</sub> emissions by 20 to 30%\* in the main speed range.

\*compared to vessels of the same weight and size with a traditional hard-chine hull and shaft line propulsion



# CARBON-TECH GENERATION

Azimut's pioneering use of carbon fiber lamination goes beyond pure performance. The Carbon Tech Generation offers expanded volumes on board, while maintaining excellent dynamic stability and perfect handling. Preserving the yacht's low center of gravity, the carbon fiber was focused on the upper parts of the yacht, lightening the laminated components by up to 30% and reducing the natural roll momentum up to 15%.



① HARD TOP (OPT)

② FLYBRIDGE

③ SUPERSTRUCTURE

④ AFT PART OF THE DECK

⑤ TRANSOM AND PLATFORM



# ACTIVE TRIM CONTROL

Automated interceptors optimize the trim at every speed to maintain ideal hydrodynamics for performance and efficiency, at the same time negating any lateral imbalance due to sidewinds or weight distribution. With the pilot's peace of mind assured, the driving experience is simpler and more enjoyable.



# JOYSTICK DRIVING

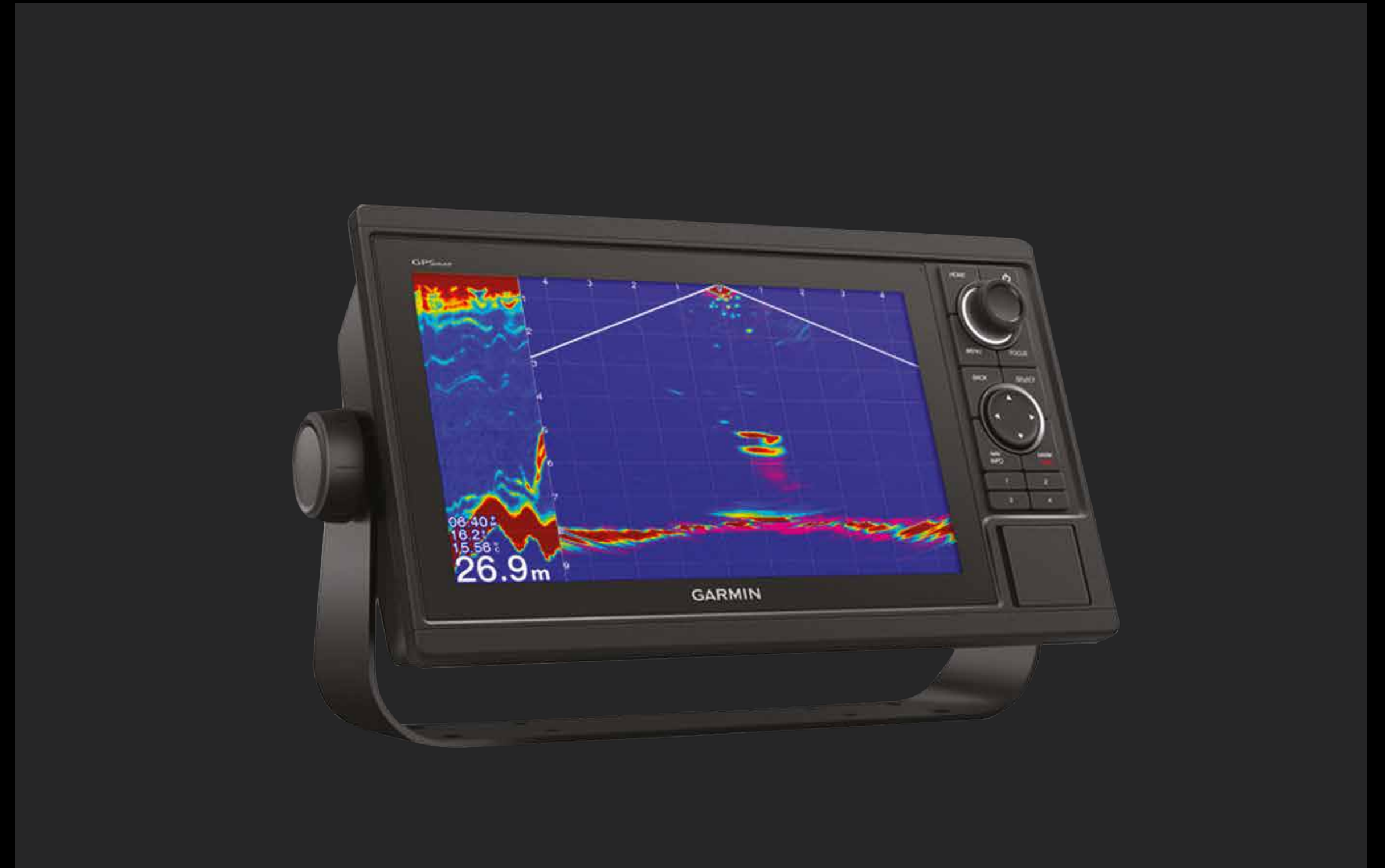
The Joystick acts as an analog for the yacht, offering intuitive, one-handed control in every situation. When the yacht is stopped, moving the Joystick forward or back, side to side, and twisting clockwise or counter-clockwise activates the engines to mimic that motion. It's the easiest way to pull off precise maneuvers. When Joystick Driving is activated, the autopilot is immediately engaged. For easy course correction, the driver may briefly twist the Joystick for 1 degree in that direction or twist and hold for 10 degrees. The Autopilot keeps a forward course after the Joystick is released.





# INTEGRATED CONTROL AND MONITORING SYSTEM

The custom-installed Garmin electronics have been integrated to control and monitor every onboard system: from engines and alarms, to bilge and water discharge pumps, tank levels and engine room ventilation, right through to the sound system and the air conditioning units. The system can be accessed on board from both the interior and exterior helm stations and, with the mobile app, remotely from a tablet or smartphone.





# EFFICIENT AIR TREATMENT

Aircare Energy Saving completely refreshes the onboard atmosphere every two hours with filtered outside air, especially appreciated below deck. The decentralized system uses a dual-flow heat exchanger, so it can optimize both the temperature and the humidity of the incoming fresh air in each zone without increasing the parallel HVAC's energy consumption. Meanwhile, the triple multilayered filter eliminates 98% of fine particles that pollute the air, such as pollen, dust mites, spores and even some bacteria.






# HTS HIGH TECHNICAL STANDARD DECLARATION

This yacht's design and engineering meet the highest standards for production recreational vessels. Azimut Yachts issues a declaration of the premium materials, advanced technology and rigorous testing procedures.







03

# FLY 78 SPEC SHEET



# GENERAL CHARACTERISTICS

LENGTH OVERALL	23,64 m	77' 7"
BEAM MAX	5,75 m	18' 10"
DRAFT	1,77 m	5' 10"
DISPLACEMENT	58 t	127868 lb
ENGINES	3 x VOLVO IPS 1200 (900 hp) - 3 x VOLVO IPS 1350 (1000 hp)	
MAXIMUM SPEED	up to 33 knots	
CRUISING SPEED	up to 26 kn	
KEEL	Planing with aft deadrise 16,3°	
FUEL CAPACITY	5000 l	1321 US Gal
WATER CAPACITY	1100 l	291 US Gal
CABINS	4 + 1 crew	
BERTHS	8 + 2 crew	
HEAD COMPARTMENTS	4 + 1 crew	
BUILDING MATERIALS	Carbon Fibre + GRP	
EXTERIOR STYLING	Alberto Mancini	
INTERIOR DESIGNER	Achille Salvagni Architetti	
HULL DESIGNER	P.L. Ausonio Naval Architecture & Azimut R&D Dept.	
BUILDER	Azimut Yachts	
CERTIFICATIONS	CE A; NMMA	

Last updated 08.2022

Please consult your dealer for the latest specifications.

UNI ISO 8666

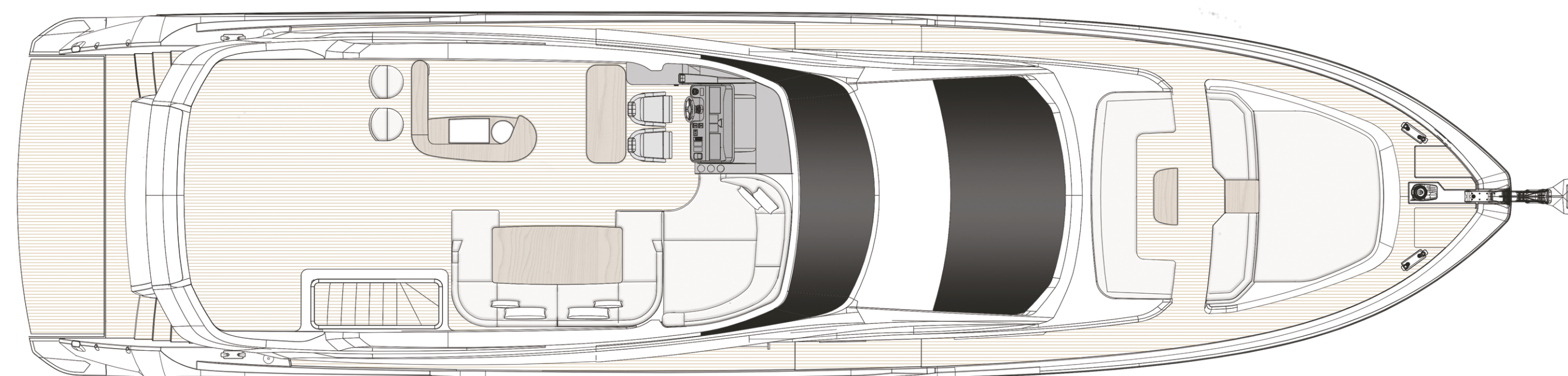
The performance described applies to a vessel with standard configuration (standard equipment installed) and a clean hull, propellers, and rudder. It is also noted that the performance described was recorded under favourable sea and wind conditions (Beaufort scale index 1, Douglas scale index 1); different and worse sea conditions could significantly impact performance.

CE MARK

Given the continual evolution of technology, Azimut | Benetti S.p.A reserves the right to modify the technical specifications on its vessels at any time and without prior notice.



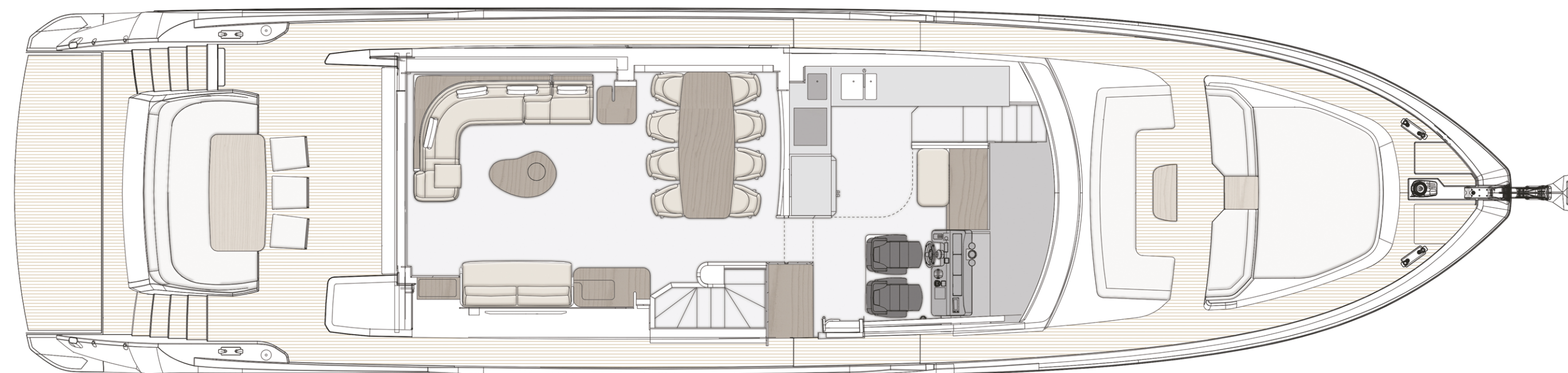
# FLYBRIDGE



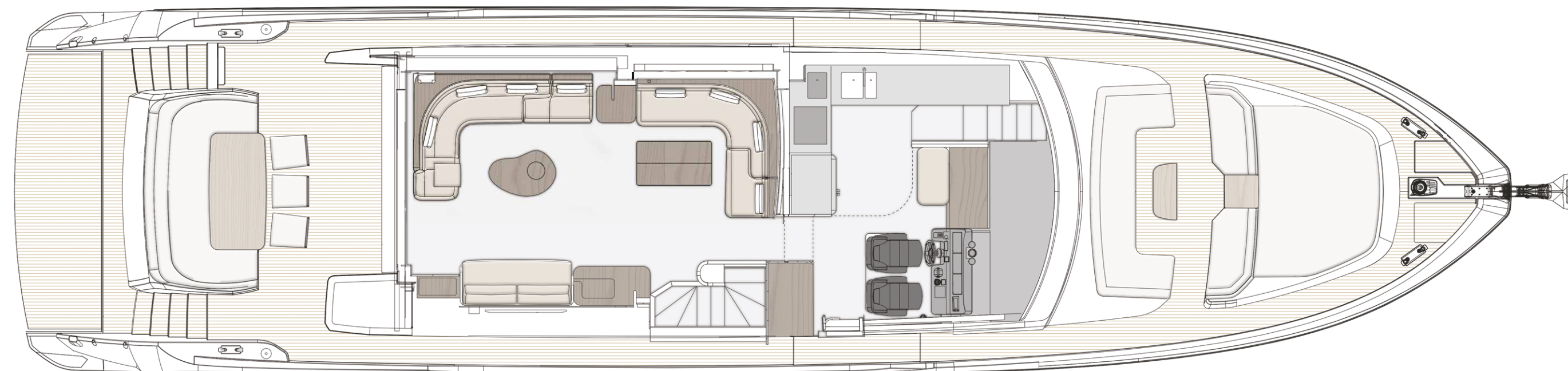


# MAIN DECK

TRADITIONAL DINING VERSION

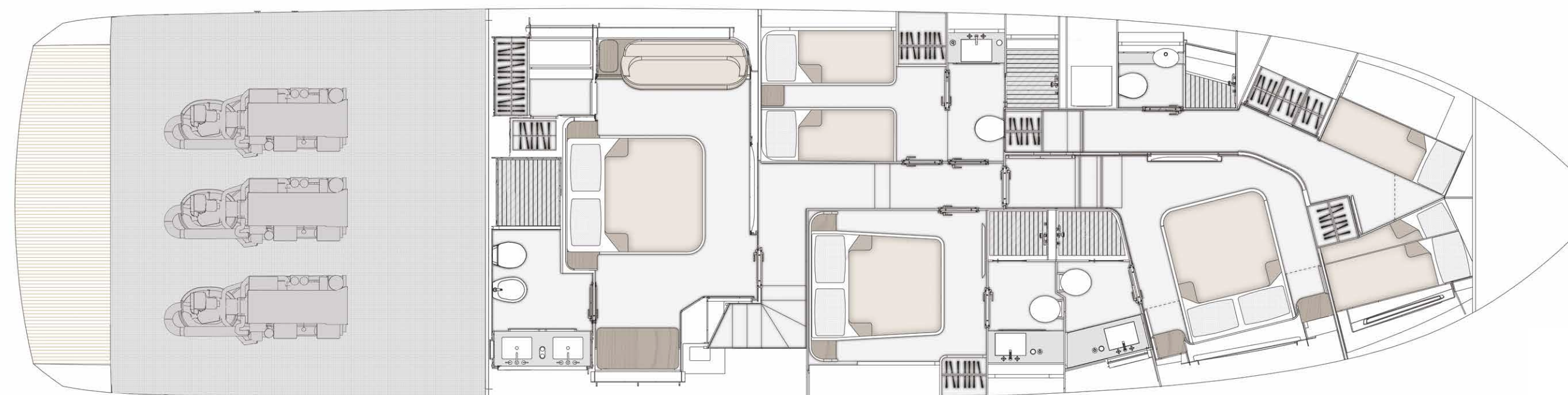


LOUNGE VERSION





# LOWER DECK







04

# THE FLY SERIES



# A VISUALLY IMMERSIVE EXPERIENCE

A barrierless and illuminated experience, the iconic Flybridge boat series was forged out of tradition to immerse its guests in the sea, while inspiring the unique feeling of open-air freedom.


Sleek and spacious all-Italian interiors are bound to create a sensational atmosphere, filling days and nights with charming comfort and lightness.

Experience yesterday's game-changer spirit upped by today's avant-garde air.

50  
53  
60  
68  
72  
78







05

# ABOUT AZIMUT





# A FAMILY-MADE COMPANY CULTURE

An immense and personal passion for the sea. A clear and forward-facing attitude. A strong and relentless work ethic. Since 1969, Paolo Vitelli, the creative visionary founder and businessman behind Azimut, has been set on challenging the industry's status quo with a daring desire: bring to life an unexpected nautical experience, through yachts built to combine alluring aesthetics with construction expertise and impeccable technology.

An audacious mindset that has, over time, surprised and captivated the yachting sector, transforming Azimut into a bold and recognizable benchmark, and laying the foundation for the birth of the largest megayacht builder in the world, the Azimut | Benetti Group.

The international and management-based standing of the company today, is deeply nourished by the solid and memorable family heritage that has distinguished it from the beginning. A historically pioneering vision that enables it to continue thriving day after day, through ingenious inventions and long-term goals that look to the future with Paolo's daughter, Giovanna Vitelli.



# A SUSTAINABLE VISION TODAY, FOR TOMORROW

An avant-garde vision and a strong emotional appeal have shaped the history of Azimut as a leader in the field of nautical innovation as well as its commitment to the creation of a sustainable-oriented and attentive company culture today.

An ambitious and personal touch that has allowed Azimut to grow and evolve on both levels, embracing the challenge of a future nurtured by an eco-conscious approach to boat construction and by an authentic focus and responsibility on human well-being.







# OUR ♻️ ECO-YACHTING PHILOSOPHY

The Azimut I Benetti Group has made tangible investments to guide the Technical as well as the R&D departments toward the construction of yachts with a diminished environmental impact. Its main areas of intervention have focused on significantly lowering fuel consumption and CO2 emissions through the development of highly efficient hull designs, innovative propulsion systems and an extensive use of carbon fiber to decrease yacht weight.





# A SAFE AND HEALTHY WORK ENVIRONMENT

The forerunning shipyard of Avigliana was the first of the company's Italian shipyards to obtain the ISO 45001 certification in 2011, attesting its rigorous abidance to all occupational health and safety requirements. Recognized as the most technologically-advanced shipyard in Europe, it has also led the nautical sector revolution in terms of being among the earliest adopters of the vacuum infusion process to drive resin into a laminate, avoiding styrene emissions and therefore guaranteeing its precious workers a healthier setting.

As of 2013, all the other Italian production sites have adapted to meet the necessary requirements to obtain the ISO 45001 certification.







# A GLOBALLY-CONNECTED DEALER AND SERVICE NETWORK

---

5 SHIPYARDS

---

6 DIRECT OFFICES

---

138 OFFICIAL DEALERS

---

80 COUNTRIES

---

The highly widespread commercial network put in place by Azimut Yachts, allows the company to offer a continuous presence to its ship owners, concretely curating their demands by meeting their most specific needs.

[Find your Dealer →](#)





# THE LARGEST PRIVATE GROUP IN THE YACHTING WORLD

Azimut is part of the Azimut | Benetti Group, the biggest private player and shipbuilder in the nautical sector today. The Vitelli family, the founder and majority shareholder of the company, has been leading the way for over fifty years now, continuing to innovate through the Group's main yacht brands, Azimut and Benetti, while developing a variety of service brands to cater to the different demands of ship owners worldwide.





# OUR SHIPYARDS MAKE US PROUD

Avigliana — Italy

HQ / SHIPYARD

Savona — Italy

DELIVERY CENTRE

Viareggio — Italy

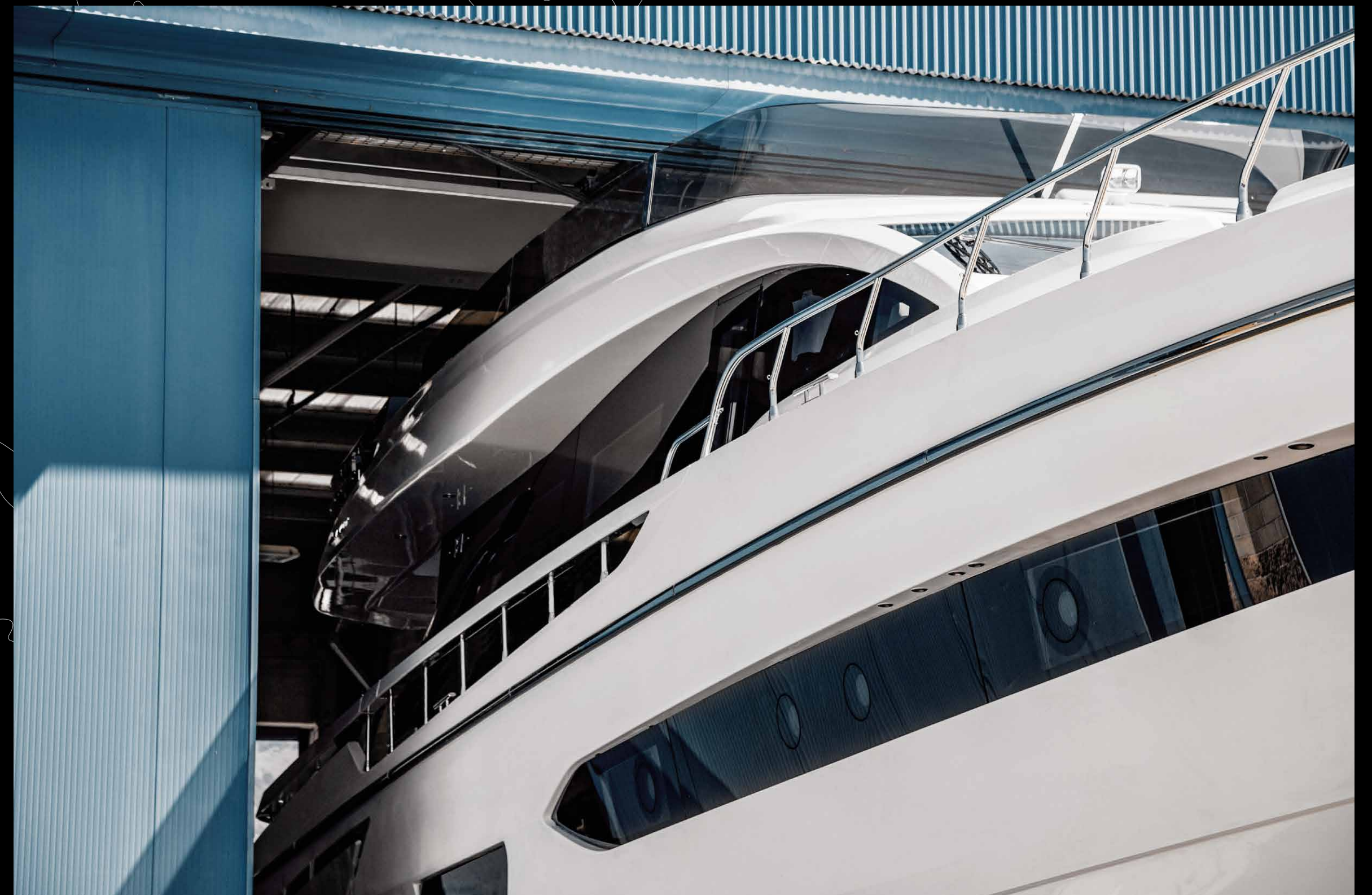
SHIPYARD / STYLING LOUNGE

Fano — Italy

SHIPYARD

Itajaí — Brazil

SHIPYARD







CONCEPT & DESIGN: APART  
PHOTOS: ALESSANDRO GUERRIERI, PAOLO PETRIGNANI

AZIMUT YACHTS THANKS:  
ACHILLE SALVAGNI ARCHITETTI, ALDUS, OLIVERI HOME, APR  
LUXURY LINEN, DEDAR, MARIAFLORA

OFFICIAL PARTNERS



GARMIN.

NAVICO  
GROUP

Raymarine

SEAKEEPER

VOLVO  
PENTA

AZIMUT | BENETTI SPA  
VIA MARTIN LUTHER KING, 9  
10051 AVIGLIANA, TORINO  
ITALY

RELEASE 01.24

This brochure in no way constitutes a contract of sale for the boatyard's vessels to any person or company. All information contained herein, including but not limited to technical and performance data, illustrations, and drawings, is non-binding and for purposes of illustration only. The information in this brochure refers to the boatyard's standard motoryacht models available as of the date of publication. Technical and descriptive information is valid only to the extent that it pertains to the specific vessel that is the subject of a purchase. Contract terms are valid only to the extent that they are contained in a contract of sale. This document is based on information available at the time of publication. Despite efforts to ensure the greatest possible accuracy, the information contained herein may fail to cover all details, omit technical or commercial changes that may have been made subsequent to publication, describe features that are not present, and fail to envisage all circumstances that might occur. Any illustrations, photographs, diagrams and examples shown in this brochure are included solely for the purposes of illustrating the text. Due to the different features of each vessel, the boatyard assumes no liability for actual use based on the illustrated applications.



AZIMUT

[azimutyachts.com](http://azimutyachts.com)

